

THE *Love* COLLECTION

newchef®



newchef®

\$55.00

NC-CECIL-LUV

SKU: 145254

White/Light Grey

- 65% polyester 35% cotton
- Contrast 100% polyester
- Female cut chef coat
- Pride stripes on collar
- Front & back side mesh panels
- Short sleeves
- Matte snap closure
- Arm pocket with thermometer divider
- Side slits



newchef®

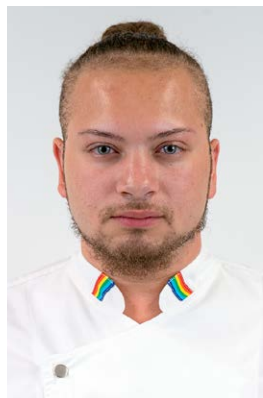
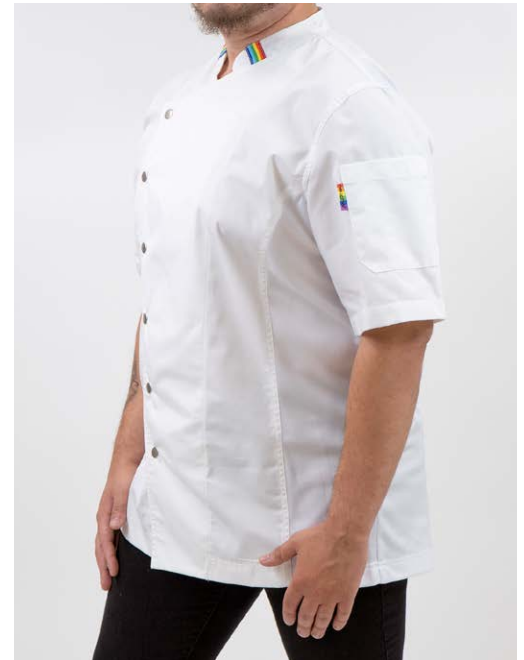
\$55.00

NC-CYRIL-LUV

SKU: 145263

White/White Mesh

- 65% polyester 35% cotton
- 100% polyester mesh
- Male cut chef coat
- Pride stripes on collar
- Front & back side mesh panels
- Short sleeves
- Matte snap closure
- Arm pocket with thermometer divider





newchef®

\$65.00
NC-PLYMOUTH-LUV
SKU: 145265

White/White Mesh

- 65% polyester 35% cotton
- 100% polyester mesh Male cut chef coat
- Diagonally apposed collar
- Short sleeves with cuff
- Pride colored trim around top of cuff, colored trim around collar & down front
- Matte silver snap closure
- Contrast mesh side panels front & back
- Arm pocket with thermometer divider



newchef®

\$65.00

NC-PLYMOUTH-LUV

SKU: 145266

Black/Black Mesh

- 65% polyester 35% cotton
- 100% polyester mesh
- Male cut chef coat
- Diagonally apposed collar
- Short sleeves with cuff
- Pride colored trim around top of cuff, colored trim around collar & down front
- Matte silver snap closure
- Contrast mesh side panels front & back
- Arm pocket with thermometer divider





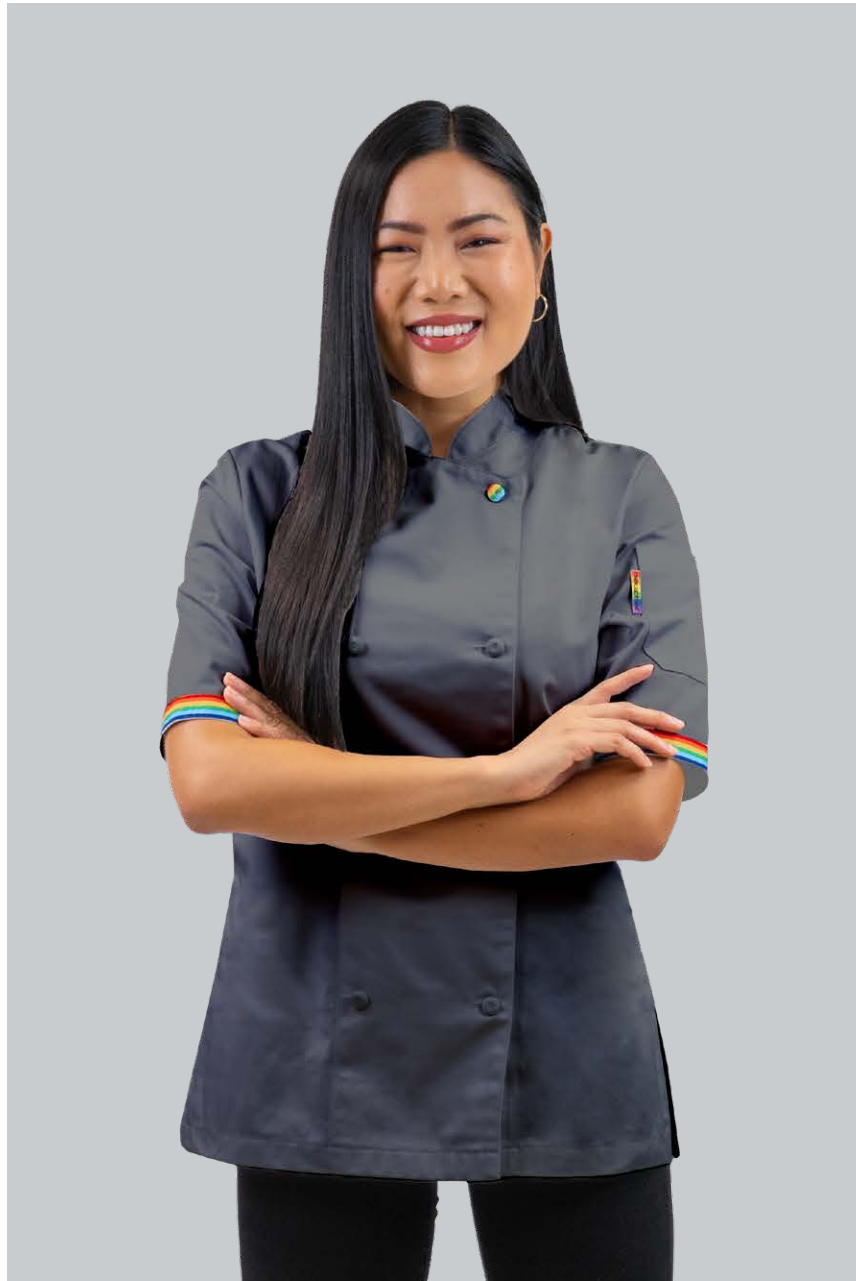
newchef®

\$36.50
NC-1001L-LUV
SKU: 145255

White

- 65% polyester 35% cotton
- Female cut chef coat
- Cloth covered buttons
- Pride accent button
- Pride trim at edge of sleeve
- Arm pocket with thermometer divider





newchef®

\$36.50
NC-1001L-LUV
SKU: 145290

Charcoal

- 65% polyester 35% cotton
- Female cut chef coat
- Cloth covered buttons
- Pride accent button
- Pride trim at edge of sleeve
- Arm pocket with thermometer divider



*Black option available SKU: 145291





newchef®

\$36.50
NC-1001-LUV
SKU: 145298

White

- 65% polyester 35% cotton
- Male cut chef coat
- Cloth covered buttons
- Pride accent button
- Pride colored trim around top of cuff
- Arm pocket with thermometer divider





newchef®

\$61.50
NC- NORMA-LUV
SKU: 145267

White/White Mesh

- 65% polyester 35% cotton
- 100% polyester mesh
- Female cut chef coat
- Pride label
- Contrast mesh side panels front & back
- Short sleeves
- Arm pocket
- Hidden Zipper





newchef®

\$95.00
NC-BRENNA-LUV
SKU: 145264

Indigo

- 100% cotton
- Female cut chef coat
- Metal copper colored buttons
- Long sleeves with button up contrast sleeve tabs
- Copper single needle topstitch on pkt
- Arm pocket with thermometer divider





newchef®

\$45.00

NC-AMBERT

SKU: 145303

Color powder explosion printing

- 100% polyester
- Bib apron adjustable neckline



newchef®

\$28.95
NC-PRIDE-H
SKU: 145261

Sky Blue

- 100% polyester
- Bib apron
- Pride love heart print



newchef®

\$28.95
NC-LOVE-ST
SKU: 145262

Magenta

- 100% polyester
- Bib apron
- Pride love left side rainbow print





\$30.00
NC-SADM130-LOVEC
SKU: 145309

Deep Orange Heather

- 4.5-ounce, 50/25/25 poly/combed ring spun cotton/rayon, 32 singles
- 1x1 rib knit neck
- Tear-away label
- Shoulder to shoulder taping



\$30.00
NC-SADM130L-LUV
SKU: 145306

Maritime Frost

- 4.5-ounce, 50/25/25 poly/ring spun combed cotton/rayon, 32 singles
- 1x1 rib knit neck
- Tear-away label
- Shoulder to shoulder taping





\$30.00
NC-SADT153-LUV
SKU: 145308

Wisteria Heather

- 4.5-ounce, 50/25/25 poly/combed ring spun cotton/rayon, 32 singles
- 1x1 rib knit neck
- Double-needle stitching at armholes
- Side seamed
- Tear-away label



\$30.00
NC-SADM130-LUV
SKU: 145307

Black

- 4.5-ounce, 50/25/25 poly/combed ring spun cotton/rayon, 32 singles
- 1x1 rib knit neck
- Tear-away label
- Shoulder to shoulder taping





newchef®

\$28.95

NC-ASHBY-LUV

SKU: 145482

Black/Red Contrast

65% polyester 35% cotton twill waist apron
Red contrast webbing ties
Red contrast top stitching
Left reinforced patch pocket
Pride label

THE *Love*
COLLECTION





newchef®

THE *Love*
COLLECTION

\$28.95

NC-MATTHEW-LUV

SKU: 145487

Black/Yellow Contrast

65% polyester 35% cotton twill waist apron
Yellow contrast webbing ties
Yellow contrast top stitching
Left reinforced patch pocket
Pride label



newchef®

\$34.00

NC-KACEY-LUV

SKU: 145476

Carmel/Natural Contrast

100% Carmel polyester waist apron
Natural colored webbing ties
Contrast top stitching
Reinforced center divided pocket
Right side utility ring
Faux linen
Pride label

THE *Love*
COLLECTION



newchef®

THE *Love*
COLLECTION

\$32.00

NC-F28-LUV

SKU: 145480

Spruce Green/Mica Contrast

65% polyester 35% cotton twill waist apron
Suede contrast ties
Contrast top stitching
Reinforced center divided pocket
Pride label



THE *Love* COLLECTION

**CUSTOM
MANUFACTURING**

look good feel good cook good

Monday - Friday 7:30am - 5:00pm PST

NEWCHEF Fashion Inc. 3223 East 46th Street, Los Angeles, CA., 90058

Toll Free: 1.800.NEWCHEF (639.2433)

Fax: 1.323.581.0077

www.newchef.com

newchef®

CONTACT US

